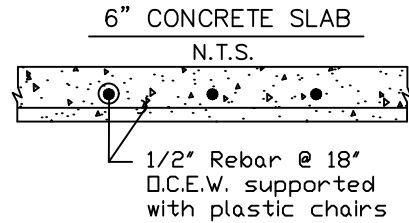
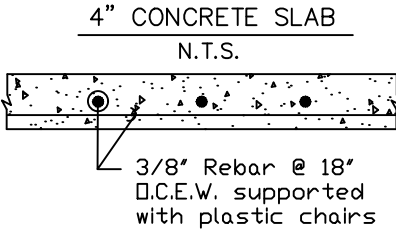


- Ballards shall be:
1. Min. 6" dia. steel casing pipe.
  2. Filled with min. 2,000 psi concrete.
  3. Min. 5' long w/ min. 2" buried.

Alternate designs may be submitted to City Engineer.

PLAN VIEW  
N.T.S.



Notes:

1. Pad and approach shall be sloped a minimum of 1/8" per foot in a direction that best fits the slope of the surrounding parking lot.
2. Concrete to be a min. 5 sack mix 3,000 psi. Concrete placed on 2" min. sand cushion.
3. Subgrade shall be compacted to 95% of the standard proctor density.
4. Solid gates must be wood or metal.
5. Wall and footings must meet requirements of IBC Chapter 16 wind loads.

PAVING



"A Quality of Life City"

DUMPSTER APPROACH, PAD DETAILS  
AND ENCLOSURE SIZE

DEPARTMENT OF PUBLIC WORKS – ENGINEERING

DATE: 12-07-16	DRAWN BY: D.H.	APPROVED BY: D.D.	ORDINANCE: 27.21(j)	SHEET NO.:
-------------------	-------------------	----------------------	------------------------	------------